

## SWEEP Audio AC1-D

Acoustic test chamber for Production Line Test and Development of Audio products

Self Insertion Loss: >20 dB

Average attenuation: 37,3 dB (50Hz-16,5kHz)

The SWEEP Audio AC1-D is an acoustic test chamber for development and production line testing of different types of audio products, such as headphones, speakerphones, wearables and smaller speakers, speaker drivers and Bluetooth® devices.

It is made from High Density Fiberboard (HDF) lined with the efficiently acoustic absorbing BasoTect (™) and placed on highly vibration dampening rubber feet.

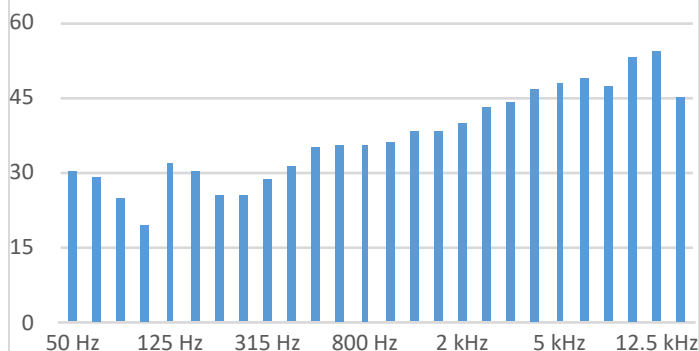
With its 4 fixation points in the top, 4 in the bottom plus 2 in each side of the chamber, it can be configured with both standard types of fixtures as well as customised ones.

AC1-D offers many possibilities for placement of microphones and reference sound sources or mouth simulators inside of the box.

The large opening offers easy access to safe and repeatable placement and removal of the device under test (DUT)



### AC-1D Acoustic Test Chamber Attenuation [dB]



The connector panel is accessible from both outside and inside for easy configuration of test setup, and can be customized on request.

The AC1-D Acoustic Test Chamber can even be customized in size on request.

Acoustic Test Chamber can be delivered with components or as complete turnkey system for Audio Test.

Other selectable items are; Measurement Microphones, Cables, Calibrators, Sound Sources and Audio Interfaces

#### Specifications:

Dimensions, external; HxWxD: 536x678x438 mm

Dimensions, internal; HxWxD: 370x500x270 mm

Weight: 37 kg

Self Insertion Loss: >20 dB

Average attenuation: -37,3 dB (50Hz-16,5kHz)

#### Connector panel configuration:

3 x BNC Connectors

3 x XLR Connectors

PowerCon in/out

D-Sub 9

USB

AC1-D Acoustic Test Chamber is covered by a two year warranty.

SWEEP Audio is a VibrAkustik ApS brand name.